



THE OHIO STATE UNIVERSITY

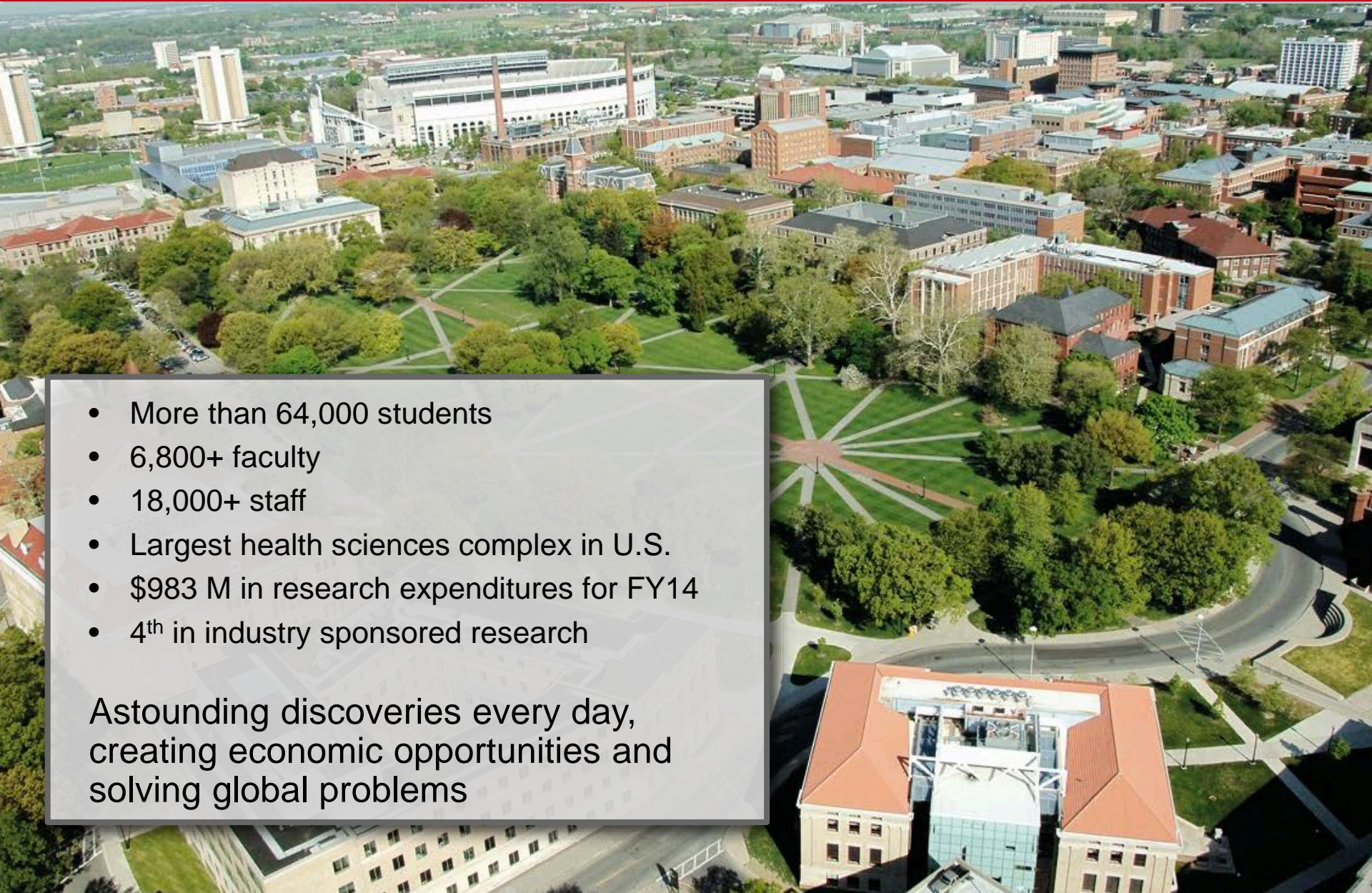
ONE UNIVERSITY: MANY OPPORTUNITIES

Research at Ohio State



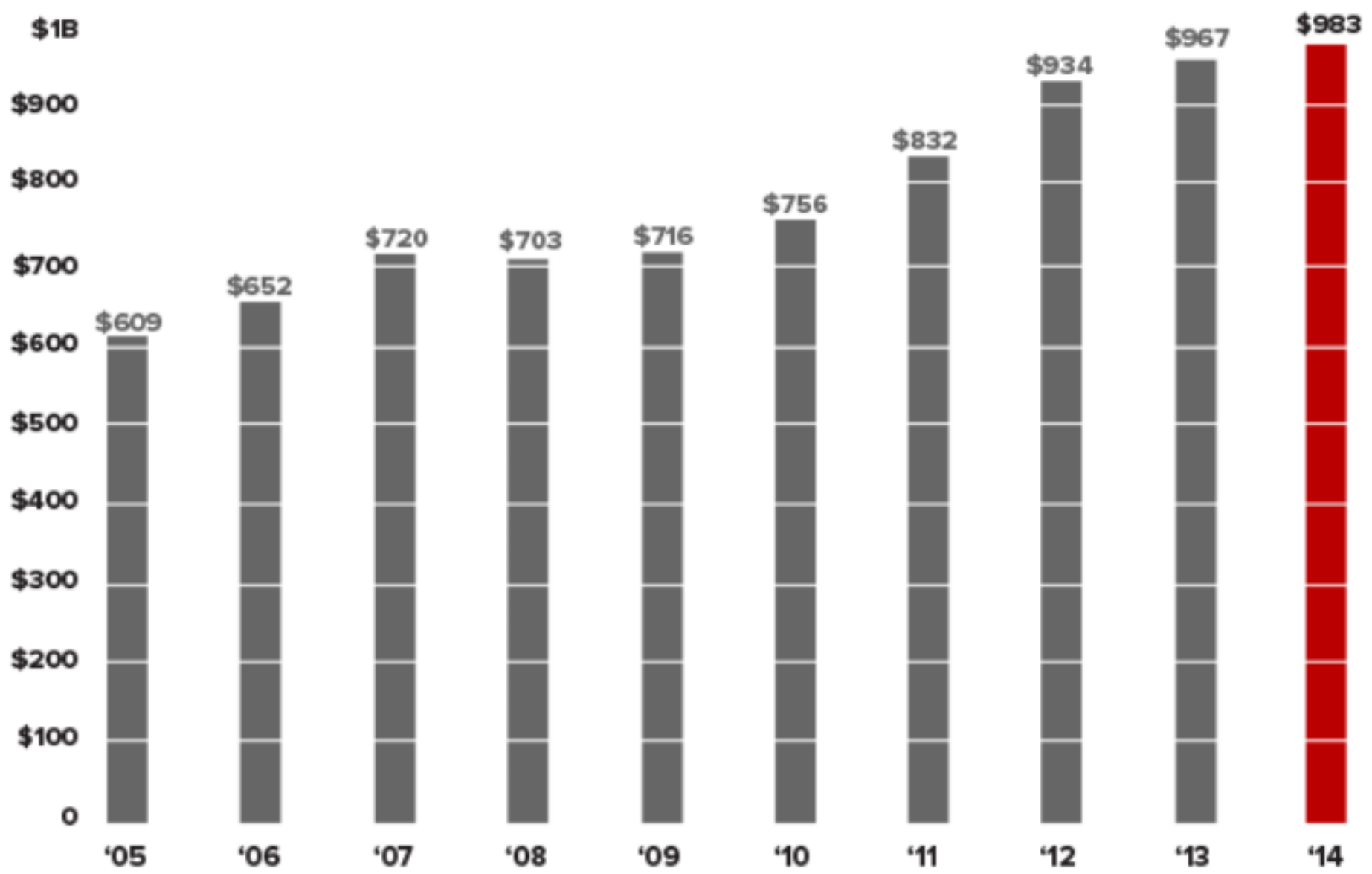
- More than 64,000 students
- 6,800+ faculty
- 18,000+ staff
- Largest health sciences complex in U.S.
- \$983 M in research expenditures for FY14
- 4th in industry sponsored research

Astounding discoveries every day,
creating economic opportunities and
solving global problems



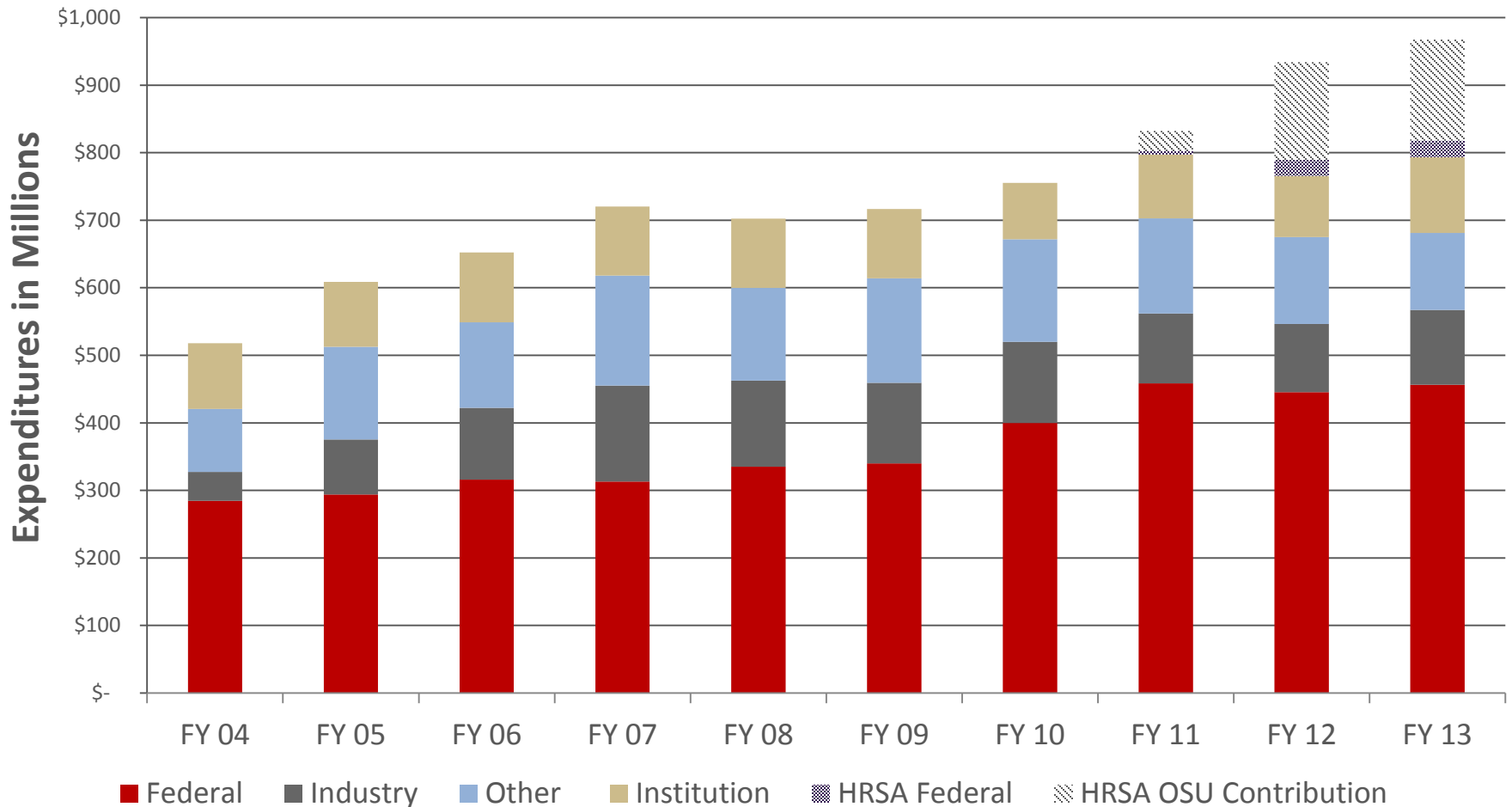
Ten-year Research Funding Profile (2005-2014)

Dollars in Millions



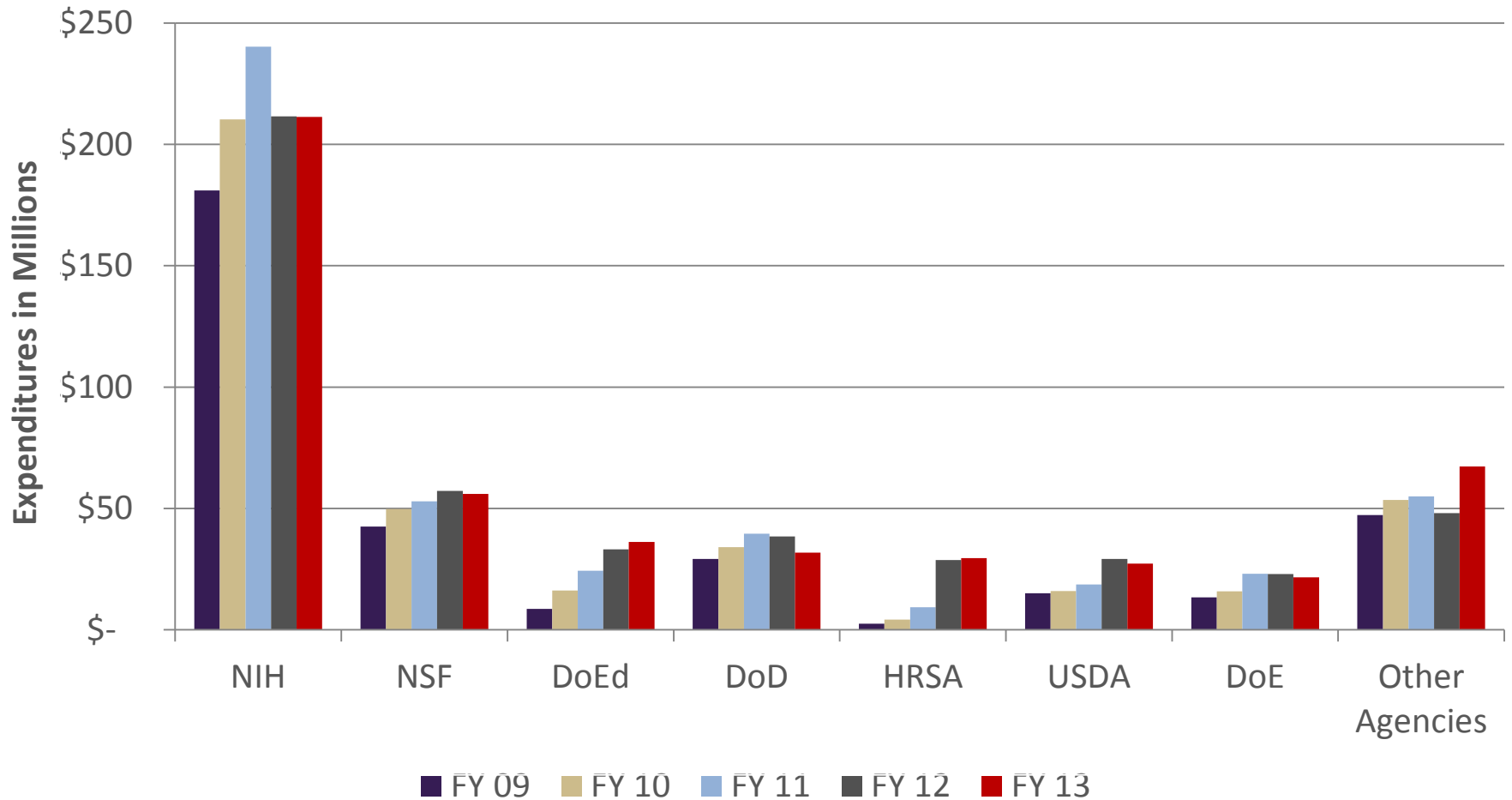


Research Expenditures FY 04 – 13





Expenditures by Federal Agency





Connecting to alternative funding sources

- Private foundations
- Corporate Philanthropy
- Donors
- Industry



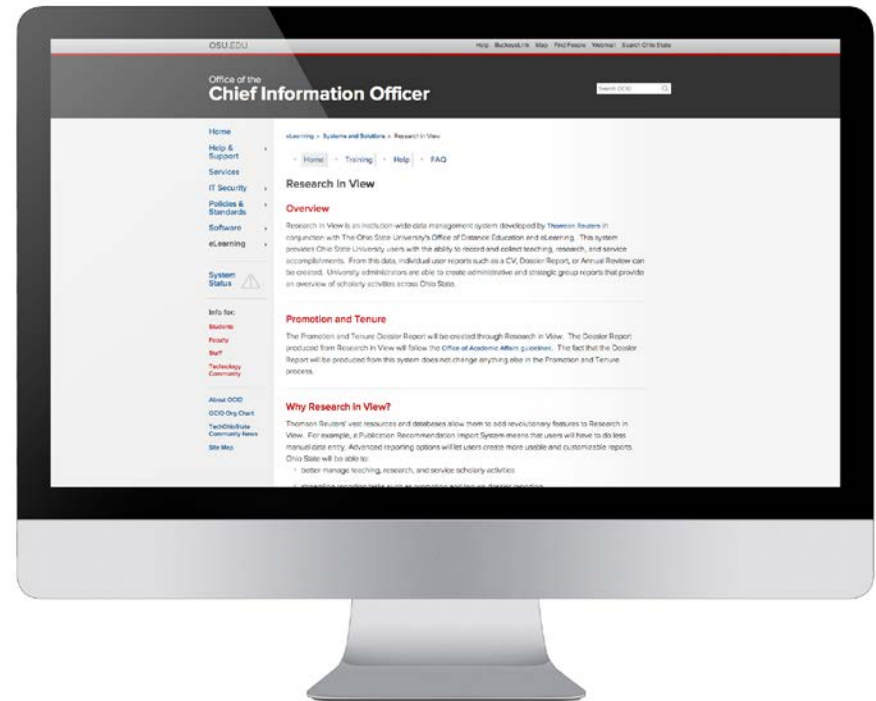


Connection to Community



Making connections through faculty expertise databases

- Research in View
- Pure Experts
- EngageOSU
- KMData





Major Industry Sponsors

- Honda R&D Americas, Inc.
- Pharmacyclics, Inc.
- Genentech, Inc.
- Pfizer, Inc.
- General Electric Aircraft Engines
- GlaxoSmithKline
- Pratt & Whitney Engines
- Medtronic, Inc.
- Toyota Motor Corporation
- Novartis Pharmaceuticals Corporation



International Research Programs

Gateways

- China 2010
- India 2012
- Brazil 2014

Strategies for alumni engagement, research and teaching, student recruitment and corporate partnerships

<http://go.osu.edu/globalfunding>



International Collaboration

- Brazil (Research grant program in partnership with FAPESP; \$1.4 M investment, split between state of São Paulo and Ohio State)
- Universitas 21 – research collaboration



How can the Office of Research help you?

- Stimulates new research, supports ongoing activities
- Identifies new sources of funding
- Fosters interdisciplinary research across campus
- Creates new opportunities for collaboration
- Ensures protection for human subjects and animals in research
- Assists in the management and commercialization of intellectual assets

Our Strategic Priorities

- Make our researchers more competitive
- Simplify administrative requirements, streamline processes
- Shape state and national conversations about research priorities



Research Partners

- **College Research Officers (associate deans for research)**
 - Administer college-based funds (seed grants, travel, etc.)
 - Help with university policies, procedures
 - Leverages the college's research portfolio and resources
- **Department chairs**
 - Determine start-up costs, graduate assistants, etc.
- **Department fiscal officers**
 - Assist with grant and start-up expenditures



Services to Support Your Research

- Proposal submission
- Post-award grant administration
- Identification of funding opportunities
- Guidance and oversight of research involving human subjects, animals, and biohazards
- Management of potential compliance risks
- Assistance with the transfer of university-developed technology to the marketplace; in partnership with the Technology Commercialization Office
- Identification of industry collaborators, industry leaders
- Access to university-wide policies and procedures



Funding & Research Development

- Assistance with finding funding & collaborators, and leveraging Ohio State's resources
- Coordination of the limited submission process, Ohio State's internal nomination process
- Supporting nominations for national and international scholarly awards and prizes

Jeff Agnoli

 agnoli.1@osu.edu or  (614) 292-6269

Office of the Vice President Research
208 Bricker Hall / 190 N. Oval Mall
Columbus, Ohio 43210



Funding and Research Development (go.osu.edu/funding)

- **SPIN Funding Opportunities Database**
 - www.infoedglobal.com
- **Research Development and Grant Writing Newsletter**
 - <http://go.osu.edu/grantwritingnews> (OSU login required)
- **Federal Grants and Contracts**
 - <http://grants.gov>
- **Research Databases**
 - <http://library.ohio-state.edu/screens/databases.html>



Funding and Research Development (go.osu.edu/funding)

- **Knowledge Management (KM) Data**
 - <http://kmdata.osu.edu> (faculty expertise)
- **Internal Funding Opportunities**
 - College, institute/center, and department web sites
- **Sponsored Program Officers**
 - <http://osp.osu.edu/spos>



University Requirements

Every proposal requires:

- ePA-005 – Authorization to Seek Off-Campus Funds form with appropriate signatures
- Principal Investigator (PI) Status Eligibility
- Approval for use of human subjects, animals, or other institutional clearances (research risks)
- Conflict of Interest requirements
- Appropriate facilities and administrative (F&A) costs as allowed by sponsor
- The Ohio State University or The Ohio State University Foundation is listed as the applicant and contractual entity



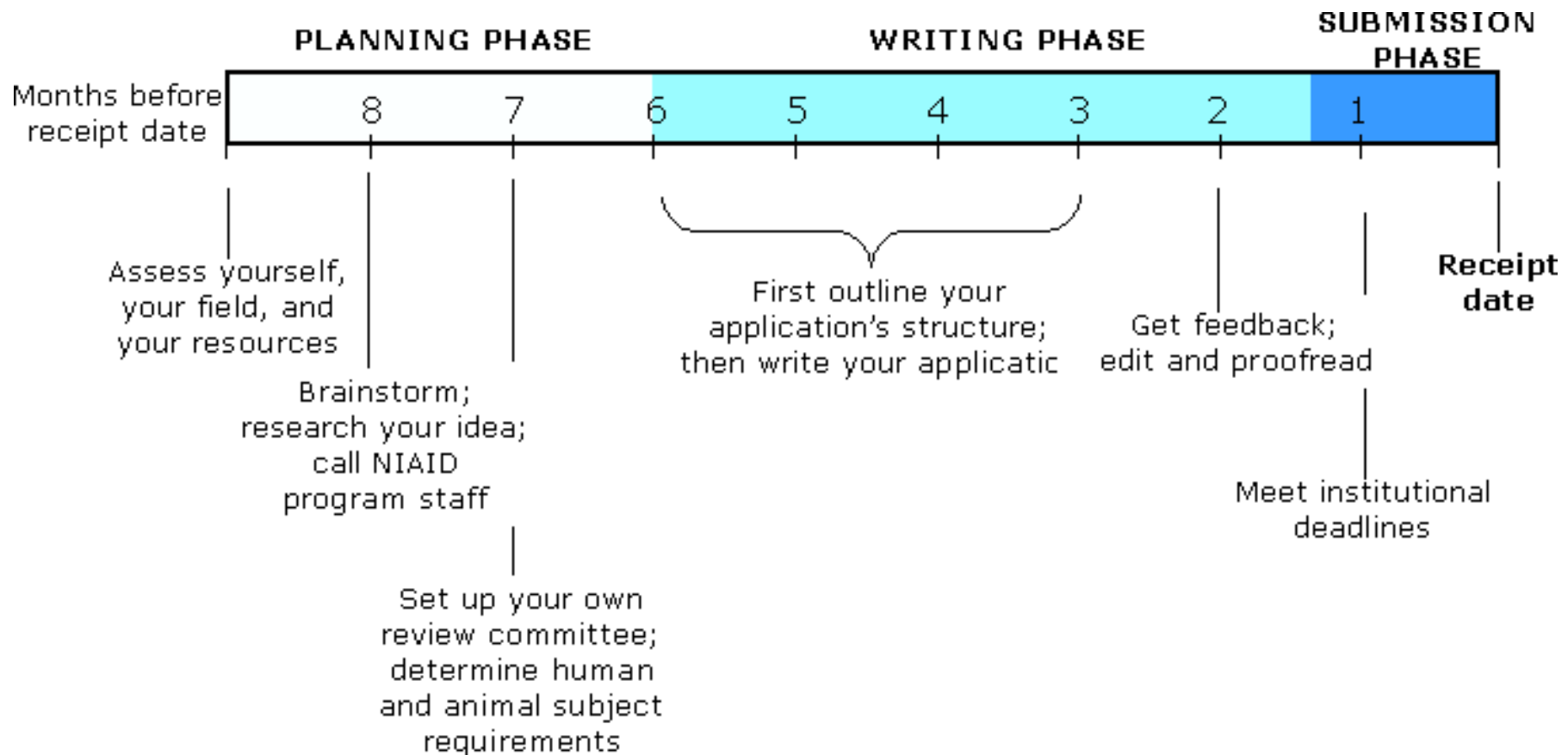
University Requirements

Proposal may also require:

- Documentation that sufficient research space is available
- Documentation of sources of cost sharing, if included in proposal



Sample Pre-Submission Timeline





OFFICE OF SPONSORED PROGRAMS

<http://osp.osu.edu/>

Services provided:

- Proposal and budget development assistance for grant submissions
- Negotiation of awards
- Management of post-award grants and contracts
 - Research purchasing
 - Research project faculty, staff, and student payrolls
- Network of sponsored program officers (SPOs) serving each college



OFFICE OF RESPONSIBLE RESEARCH PRACTICES

<http://orrp.osu.edu/irb>

- Administers Institutional Review Boards (IRBs)
- Works with investigators to help them navigate the IRBs to gain committee approvals
- Reviews and assures compliance on more than 6,000 human subjects protocols



OFFICE OF RESPONSIBLE RESEARCH PRACTICES

<http://orrrp.osu.edu/iacuc/>

- Administers the Institutional Animal Care and Use Committee (IACUC)
 - IACUC provides oversight of animals in research and instructional activities
- Works with investigators to help them navigate the IACUC to gain committee approvals
- Administers and assures compliance on over 900 animal protocols annually



OFFICE OF RESPONSIBLE RESEARCH PRACTICES

<http://orrrp.osu.edu/iacuc/>

- Provides veterinary and husbandry services for the university's 125,000 plus animals involved in biomedical research and teaching
- Ensures the humane care and use of animals
- Ensures compliance with federal laws and guidelines



SAVE THE DATES

**New Faculty Reception (8:30 AM – 9:30 AM)
& Research Expo (9:30 AM – Noon)**

Thursday September 24, 2015 | 8:30 AM – Noon
Great Hall Meeting Room, Ohio Union

State of Research Address and Innovator of the Year Awards

Thursday October 22, 2015 | 8:30 AM – 9:45 AM
US Bank Conference Theater, Ohio Union

Jeff Agnoli

Education, Funding, and Research Development

Office of the Vice President for Research

208 Bricker Hall | 190 N Oval Mall

agnoli.1@osu.edu | 614-292-6269