





Nuventive.Improve
Ohio State's system for documenting
and reporting student learning outcomes assessment







Objectives

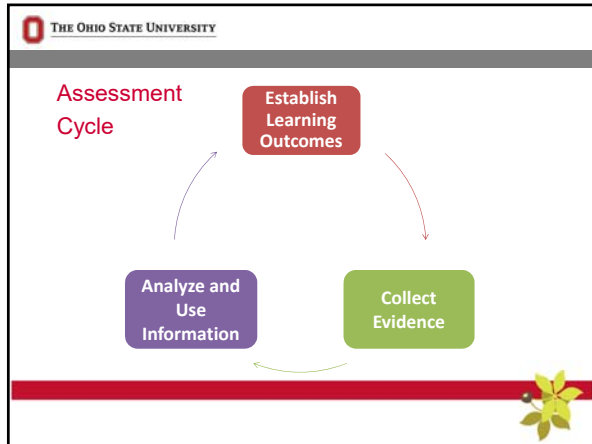
1. Provide an overview of the Improve, formerly known as TracDat, system and its key features
2. Demonstrate how to use Improve to document student learning outcomes assessment and produce reports

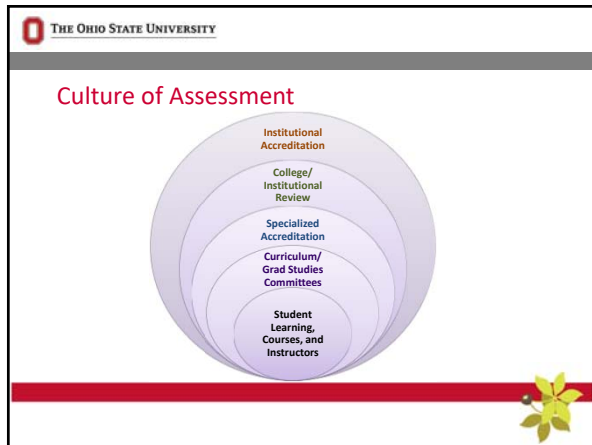




How do we know that **students learned** what we want them to learn?








Overview of Improve


- Improve is a document management system designed to **facilitate reporting** of learning outcomes assessment information at the academic program level.


The slide includes the Ohio State University logo and a decorative red bar with a yellow flower at the bottom right.

 THE OHIO STATE UNIVERSITY

Overview of Improve


- ✓ Aligns with OSU's assessment process
- ✓ Allows programs to track changes over time
- ✓ Provides a document repository
- ✓ Has robust reporting capabilities




 THE OHIO STATE UNIVERSITY

Key Features of Improve



Custom Roles	Read Only	Assessment Unit Manager	OSU Improve Administrator
View Information	x	x	x
Edit Information		x	x
Run Reports	x	x	x
Assign/Manage Users		x	x
Configure the System			x

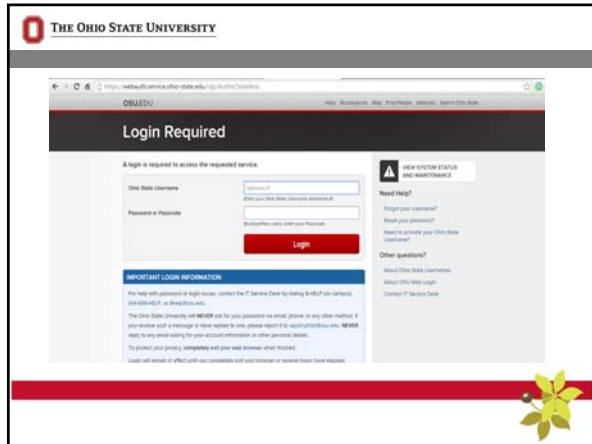


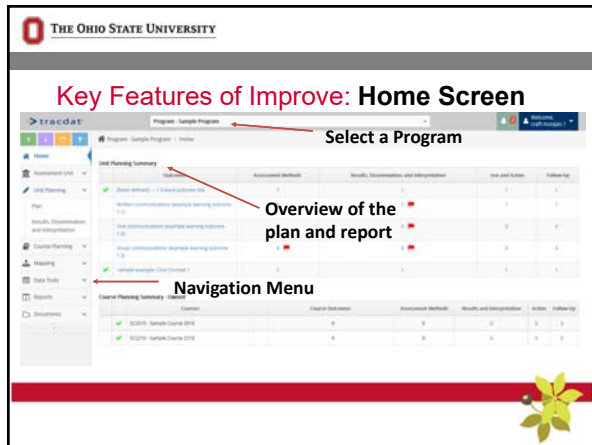
 THE OHIO STATE UNIVERSITY

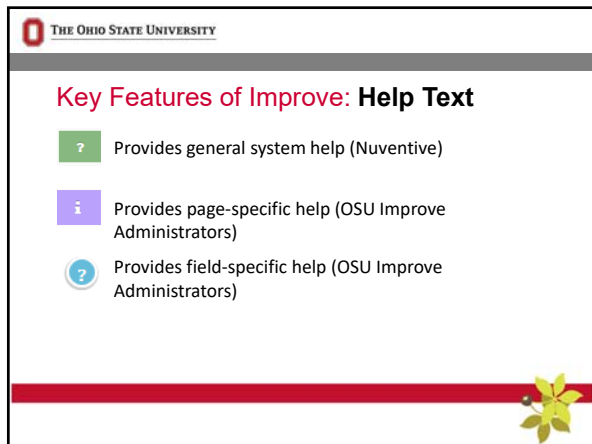
How to access Improve


- <https://osu.tracdat.com>
- **buckeyelink:**
Under Teaching on the Faculty/Staff page
- **OAA Assessment site**
<http://oaa.osu.edu/current-assessment-activities.html>











 THE OHIO STATE UNIVERSITY


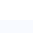


Key Features of Improve

-  Filter – use this tool to adjust what information is visible on the page
-  Activity Log – use this tool to view what changes have been made to your program’s assessment plans and reports





 THE OHIO STATE UNIVERSITY

Key Features of Improve: Editing Tools*

-  Add an element of the assessment plan or report
-  Edit
-  Copy
-  Delete (please use caution when using this tool)


*The editing tools will not appear in the Read-Only role.




 THE OHIO STATE UNIVERSITY

Elements of an Assessment Plan


- Goals (optional)
- Outcomes
- Assessment Methods




 THE OHIO STATE UNIVERSITY

Entering or Editing: The Assessment Plan


- Located on the Plan page (under **Unit Planning**)
- Use the **Editing Tools** to add new or edit existing information
- Remember to **Save** your changes




 THE OHIO STATE UNIVERSITY

Elements of an Assessment Report


- Results, Dissemination, and Interpretation
- Use and Action
- Follow-up




 THE OHIO STATE UNIVERSITY

Entering or Editing: The Assessment Report

- Located on the Results, Dissemination, and Interpretation page (under **Unit Planning**)
- Use the **Editing Tools** to add new or edit existing information
- Remember to **Save** your changes





 THE OHIO STATE UNIVERSITY

Document Repository

- Each program has access to a Document Repository where you can upload relevant items.

- These documents can be **related** to Assessment Methods or Results, Disseminations, and Interpretations.




 THE OHIO STATE UNIVERSITY


Entering or Editing: General Information

- Located on the General Information page (under **Assessment Unit**)

- Use the **Editing Tools** to add new or edit existing information

- Remember to **Save** your changes



 THE OHIO STATE UNIVERSITY


Types of Reports


- Four-Column Report

- Plan Report

- Assessment Planning Report


* Reports are available in PDF, HTML, and Word



 THE OHIO STATE UNIVERSITY

Running Reports

- Located on the Standard Reports page (under **Reports**)
- Use the **Filters and Options** to select the information to pull from the system
- Click Open Report





TracDat 
Ohio State's system for documenting and reporting student learning outcomes assessment

Thank You!

For more information, please contact:

Sheila Craft-Morgan (craft-morgan.1@osu.edu)

Warren Flood (flood.13@osu.edu)



THE OHIO STATE UNIVERSITY

Augmenting Your Skills (Refresher)




TracDat
Ohio State's system for documenting and reporting student learning outcomes assessment





Objectives

1. Review the Improve system and its key features
2. Provide hands-on training for users
3. Provide time for questions and answers





Thank You!

For more information, please contact:
Sheila Craft-Morgan (craft-morgan.1@osu.edu)
Warren Flood (flood.13@osu.edu)